

## Anatomy of the Keyboard

### Introducing the Keyboard

To play the keyboard it is necessary to understand the names of the notes, both on the keyboard and on the musical **staff**.

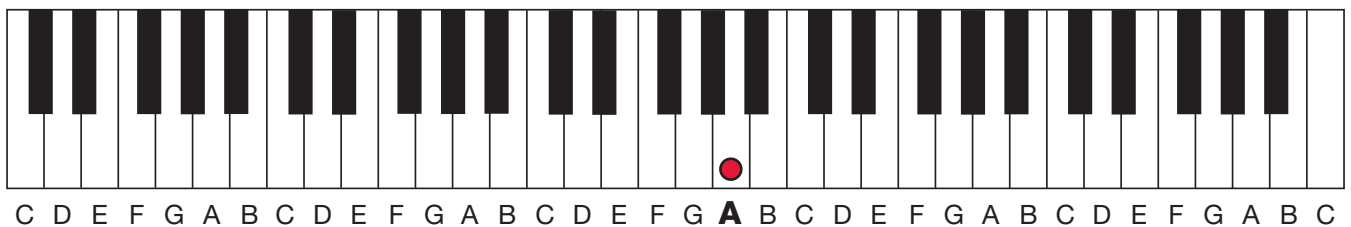
The first letter of the musical alphabet is **A** and this is where we are going to begin our study of the keyboard.

Look at our picture of a modern keyboard below. It is the same as a piano and consists of both black and white **keys**.

For the purpose of our first exercise you will see that we have indicated where you will find the note of **A**. We will introduce more notes as we progress through the lesson and course.

For the moment we have placed the note name under the white notes only in *Figure 1* below. The **A** we are going to play is slightly emboldened and has a red dot above it on the keyboard.

Figure 1: The Modern Keyboard



### Introducing the Musical Staff

We need to be able to understand notes both on the keyboard and on the musical staff as mentioned above. Have a look at our second figure below and you will see the staff upon which music is written. Each space and line represents a note and you can see that we have written an **A** note on the staff in the second space up from the bottom, in what is called the **treble clef**. We will explain the two clefs later.

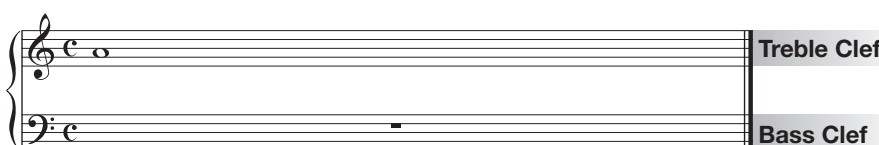


Figure 2: The musical staff introducing the note of A